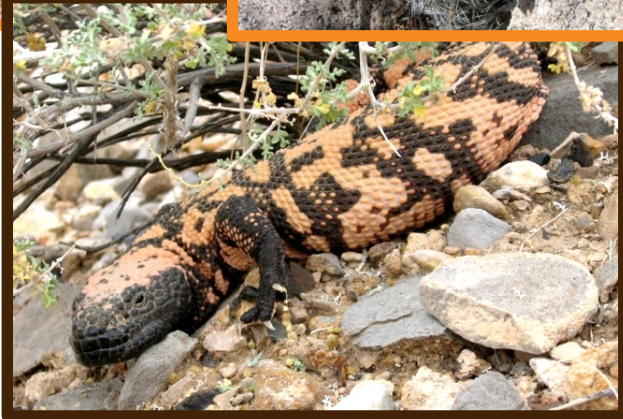


THE BEST CHOICE THE BEST SOLUTION



Clients across the country have come to rely on SNEI whenever they need to address tough environmental issues. Professionalism, an intimate knowledge of the field and astute technical ability have made SNEI what it is – the first choice in environmental services.



SNEI has offices in Las Vegas, Nevada and Victorville, California, offering availability throughout the western United States while keeping costs to a minimum. Both offices are full-service and capable of rapidly and seamlessly combining resources.

STATEMENT OF QUALIFICATIONS

Market Experience:

Renewable Energy
Electric Power
Natural Gas
Transportation
Fiber Optics
Water/Wastewater
Telecommunications
Mining
Commercial & Residential
Development
Public Facilities

SNEI has been a leader in environmental services since 1993, working with private contractors and developers, as well as federal, state and local governments, to address a wide range of environmental issues.

A fully licensed and insured environmental consulting firm, SNEI was initially founded to provide mitigation services when the desert tortoise was listed as an endangered species. SNEI has expanded its scope of services in the areas of sensitive species mitigation and management with a focus on construction monitoring and proactive problem solving.

From its beginnings, SNEI has become one of the Southwest's most highly trained and sought after environmental consulting firms, providing a broad range of services backed by a field-tested staff. As a team, SNEI maintains the highest standards within the environmental community by demonstrating expertise and knowledge of an extensive array of sensitive plant and animal species.



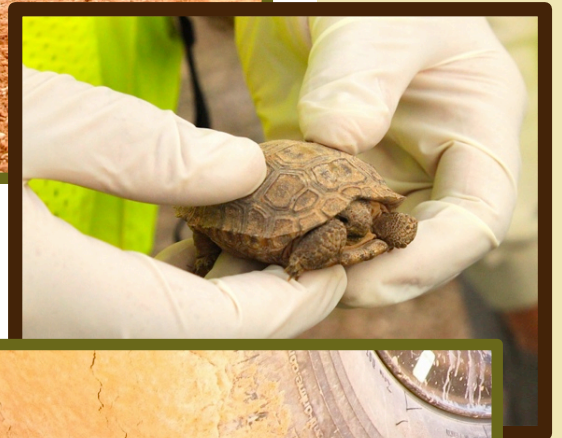
DESERT TORTOISE SERVICES

SNEI has over 26 years of desert tortoise mitigation experience in accordance with Section 7 of the Endangered Species Act. With one of the largest teams of authorized desert tortoise biologist in the Southwest region, SNEI can handle any size project. SNEI biologists are required to go through an extensive in-house training program and are qualified to perform all necessary duties of an authorized biologist on-site. SNEI has successfully completed both small and large scale projects throughout the Mojave Desert. Each project is given individual attention and a plan is tailored to the needs of our clients.



Services Offered:

- Desert Tortoise Construction Monitoring
- USFWS Authorized Desert Tortoise Biologist
- Compliance Inspection Coordinator (CIC)
- Field Contact Representative (FCR)
- Presence and Absence Surveys/Inventories
- USFWS Protocol Clearances
- Desert Tortoise Workers Training Programs
- Tortoise Exclusionary Fence Inspections



AVIAN SERVICES

SNEI has a broad array of experience in conducting surveys within the Southwest region in accordance with the Migratory Bird Treaty Act and the Endangered Species Act. SNEI provides a wide variety of services for the threatened, endangered and sensitive birds. Our staff of qualified biologists are experienced in conducting avian point counts, migratory bird, raptor and sensitive species surveys and inventories within the proposed right-of-way corridors and zone-of-influence areas to determine the presence of indigenous and/or migratory birds.

Sensitive Avian Species Services:

Avian Point Count Surveys
Migratory Bird Surveys & Nest Monitoring
Raptor Surveys & Nest Monitoring
Burrowing Owl Surveys & Clearances
Bald & Golden Eagle Surveys & Monitoring
Southwestern Willow Flycatcher Surveys
Gilded Flicker Surveys
Gila Woodpecker Surveys
Sage Grouse Surveys & Monitoring



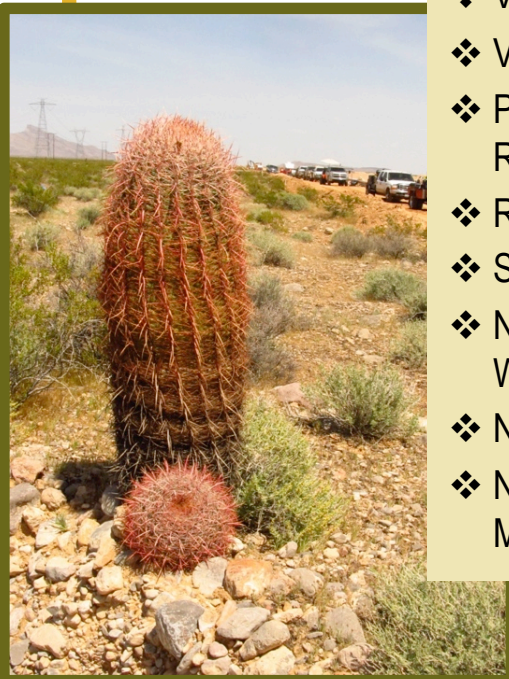
BOTANICAL SERVICES

SNEI has extensive project experience conducting botanical surveys on federal, state and private lands where rare, sensitive and protected plant species are known to or can potentially occur. These botanical surveys can determine the distribution and relative abundance of botanical resources, including special status plants (rare, threatened and endangered), noxious and invasive weeds, as well as vegetation communities. A leader in botanical consulting, SNEI provides a qualified team with an unmatched background and in-depth plant knowledge and experience. SNEI has successfully performed numerous plant salvage, re-vegetation and restoration projects throughout the Southwest.



Botanical Services:

- ❖ Sensitive & Rare Plant Identification and Inventory
- ❖ Vegetation Mapping Utilizing GIS
- ❖ Vegetative Community Analysis
- ❖ Plant Salvage, Re-Vegetation & Restoration Monitoring
- ❖ Restoration Evaluation Surveys
- ❖ Survivability Rate Analysis
- ❖ Noxious Weed Risk Assessment & Weed Management Plan
- ❖ Noxious & Invasive Weed Surveys
- ❖ Noxious Weed Abatement Monitoring



ADDITIONAL BIOLOGICAL SERVICES

Biological Experience:

Banded Gila Monster
Chuckwalla
Coachella Valley Fringe-Toed Lizard
Mojave Fringe-Toed Lizard
Flat Tailed Horned Lizard
Barefoot Banded Gecko
Amargosa Toad
Relic Leopard Frog
Utah Prairie Dog
Mohave Ground Squirrel
Various Bat Species
Venomous Snakes Awareness Program

SNEI has performed numerous project site inventories, pre-construction and preliminary surveys. SNEI's professional biologists are expertly trained to gather, analyze and disseminate information regarding biological species and ecological communities for private, state and federal clients.



Reptile and Amphibian Surveys

SNEI employs experienced herpetologists who provide accurate and detailed habitat information regarding amphibian and reptile populations. SNEI's biological staff can construct, install and survey drift fences and funnel & bucket traps to document the presence, relative distribution and densities of various species of reptiles and amphibians. Mark-recapture studies are used to aid researchers in obtaining natural history data (e.g. natural movement, habitat selection, growth rates and longevity) to determine densities and population parameters.



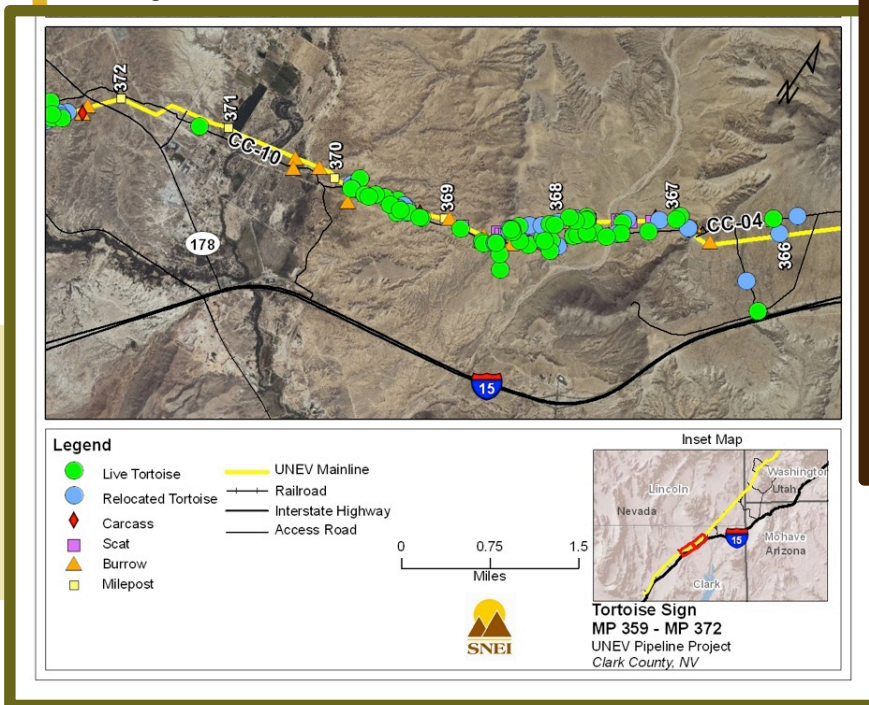
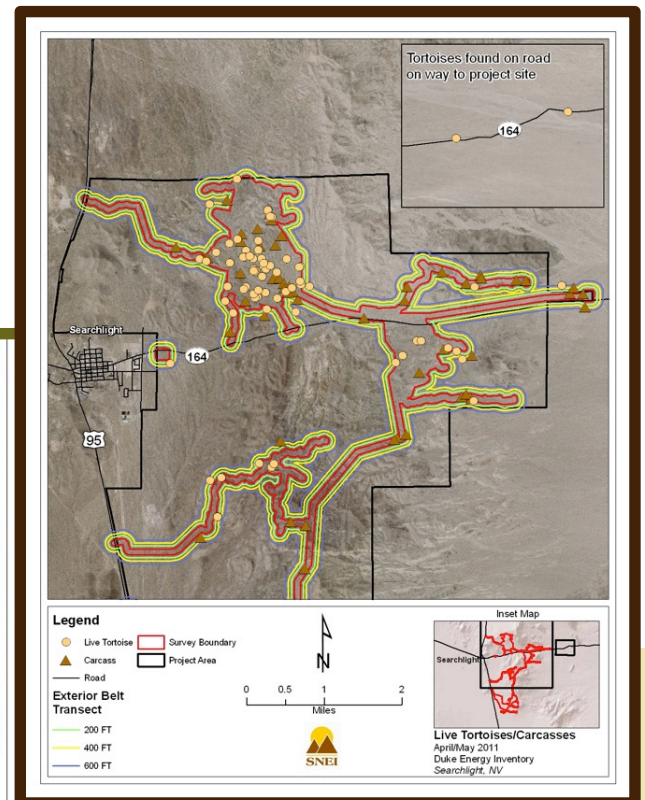
Small Mammal Surveys

SNEI services also include trapping of both sensitive and non-sensitive species to investigate relationships between habitat features, small mammal relative abundance and diversity. SNEI utilizes species identification, gender, age, class, PIT tag implantation, ear tagging, health assessments, breeding conditions, mark-recapture studies and tracking with fluorescent dyes and lights to aid in formulating management plans for small mammals, including bats, within the Southwest region.

GIS SERVICES

Geographic Information Systems

SNEI has a dedicated GIS team with ten years of experience working in the environmental, water/wastewater, forestry, solar, transportation, wind energy and pipeline industries. The GIS professionals have access to the latest ArcGIS software and GPS software including Garmin MapSource, Basecamp and ExpertGPS. The GIS staff are experts in geodatabase design, data analysis, map creation and a variety of digitizing techniques. SNEI primarily utilizes Garmin GPS units for data collection and also has experience working with Trimble GeoXT GPS units.



SNEI

9160 Dean Martin Drive
Las Vegas, Nevada 89139
Office: (702) 248-5370
Fax: (702) 248-8036

WRMSDC MBE Certified
NUCP DBE & SBE Certified
CPUC WMBE Certified



SNEI California, Inc.

15500 West Sand Street, Suite 6
Victorville, California 92392
Office: (760) 241-2200
Toll Free: (877) FOR-SNEI

CPUC WMBE Certified